

# Proposed Port Deposit Land Use/Zoning and Municipal Growth Boundary

**Official Zoning Map**  
**Town of Port Deposit**

This is to certify that this is the Official Zoning map referred to in Article II, Section 13 of the Zoning Code of the Town of Port Deposit, Maryland and supersedes and replaces the Official Zoning Map dated February 18, 2020.

Ordinance #: Ordinance 2024-02 – Adopted  
April 2, 2024

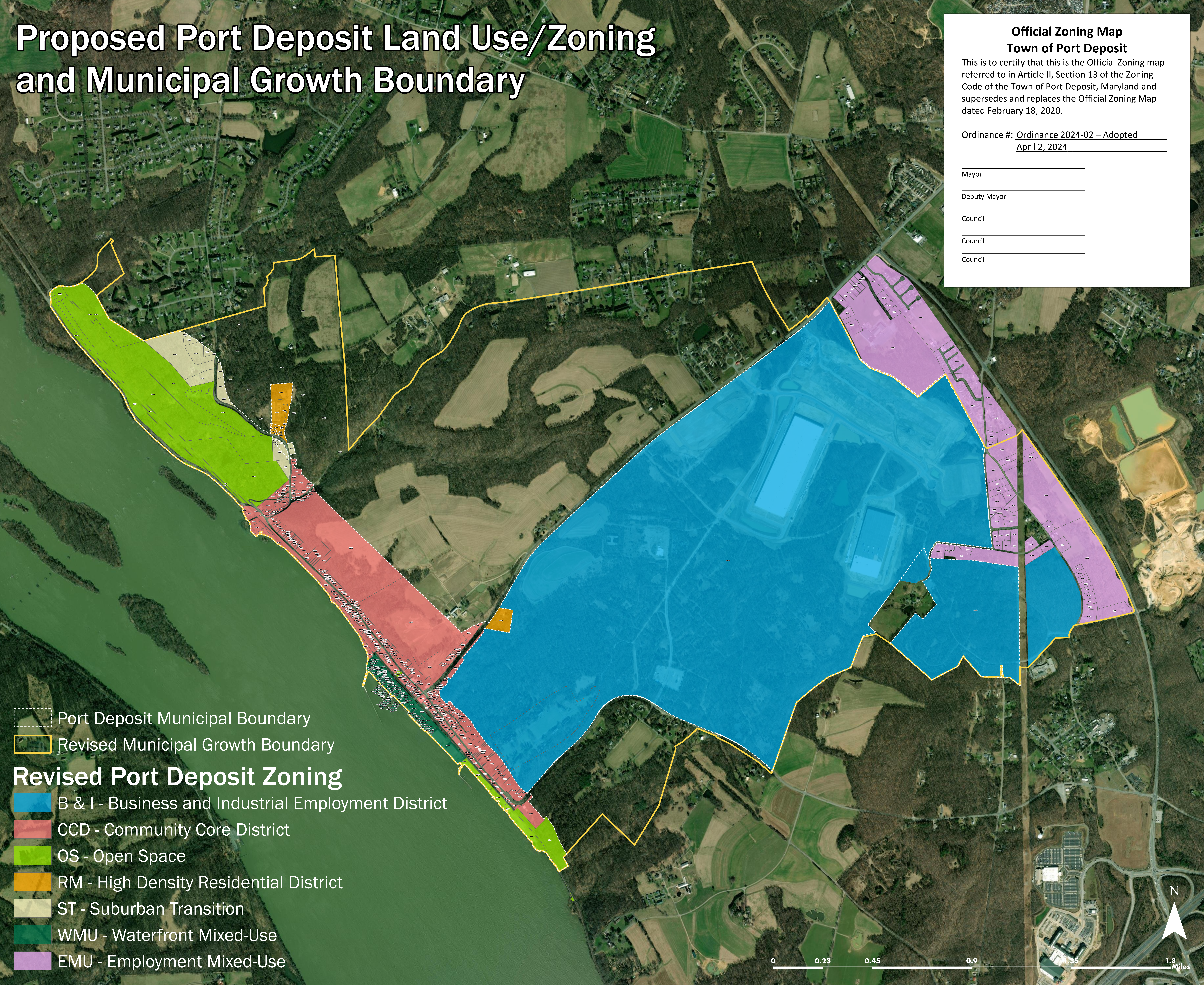
\_\_\_\_\_  
Mayor

\_\_\_\_\_  
Deputy Mayor

\_\_\_\_\_  
Council

\_\_\_\_\_  
Council

\_\_\_\_\_  
Council



 Port Deposit Municipal Boundary  
 Revised Municipal Growth Boundary

## Revised Port Deposit Zoning

-  B & I - Business and Industrial Employment District
-  CCD - Community Core District
-  OS - Open Space
-  RM - High Density Residential District
-  ST - Suburban Transition
-  WMU - Waterfront Mixed-Use
-  EMU - Employment Mixed-Use

0 0.23 0.45 0.9 1.8 Miles

